

# How do i sort different materials?

Follow our handy guide to find out!



Sort by material: colored glass, uncolored glass, plastic, paper/cardboard, metal, newspapers and recycled paper. You leave your packaging in the container with the same symbol. Either at the specified location at the residence or at one of the municipality's recycling stations.

**Is it packaging or a newspaper?**

**Is it food waste?**



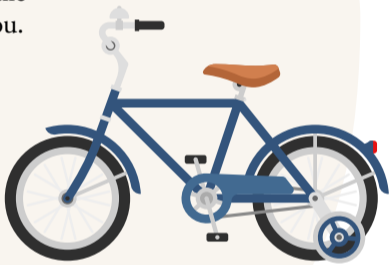
Food waste includes both raw and cooked food scraps. Sort as food waste in the municipality's food waste bag.



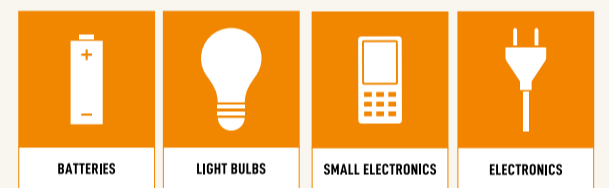
**Can it be reused?**



Leave the product for reuse. For example, at a recycling centre or at the mobile recycling centre. Many stores and charitable organisations that sell reused items often also accept them. You can also leave clothes and textiles in textile containers located near you.



**Is it a lamp, does it have a cord or battery?**

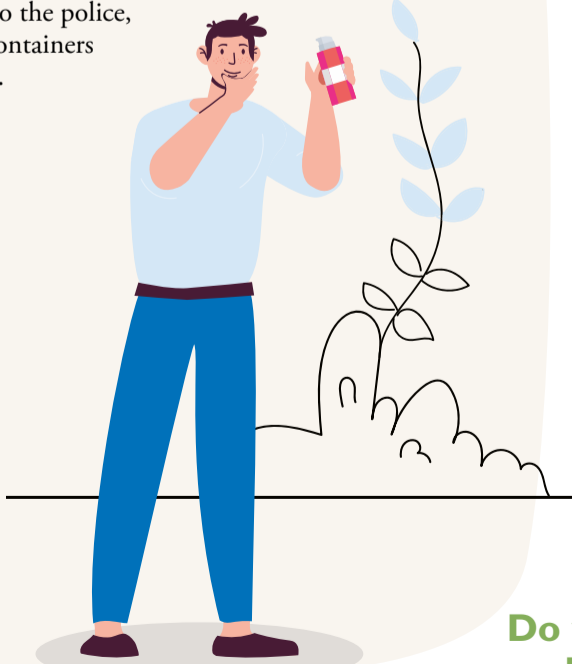


All products with a cord or battery and also fluorescent lamps and light bulbs are sorted as e-waste. Leave your e-waste at a recycling centre or at the mobile recycling centre. Some recycling rooms also have a specific box where you can leave small e-waste such as electric cords, mobile phones, batteries and light bulbs. You can also leave batteries in a battery box that is available at all recycling stations.

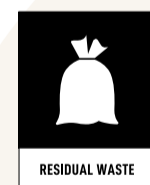
**Does it have a warning symbol, is it medication, liquid or does it contains chemicals?**



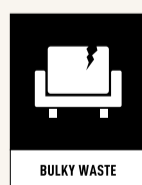
Sort as hazardous waste and leave it at a recycling centre or at the mobile recycling centre. Some apartment buildings also have designated containers for hazardous waste in recycling rooms or similar. Hand over medicines to the nearest pharmacy, fireworks and explosives to the police, and LPG containers to a retailer.



**Does the waste fit in a regular bin liner?**



If the material cannot be reused or recycled, sort it as residual waste or other household waste. Residual waste is the waste that remains after you have sorted out everything else. Residual waste should only be left in the waste container marked residual or household waste. The waste is then sent to a combined heat and power plant and turned into heat and electricity.



Then it is bulky waste. Take it to a recycling centre and sort for recycling in the respective containers, such as wood waste, scrap metal or plastic waste.



Do you want to know more?



Scan the QR code!

